

## A new Species of *Apateticus* from Louisiana (Hem., Het.).

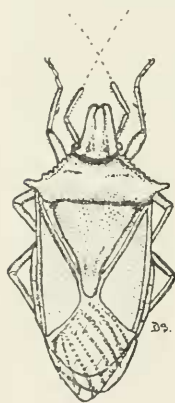
By DAYTON STONER, State University of Iowa, Iowa City,  
Iowa.

In a small collection of pentatomids recently sent me by Mr. O. W. Rosewall, of the Department of Zoology and Entomology, University of Louisiana, I found a very interesting and peculiar specimen which I was unable to satisfactorily determine. A short time ago I sent this specimen to Mr. H. G. Barber, who confirmed my suspicion that it might be a new species. It is quite unlike any of our other species of the genus *Apateticus* and displays some interesting features.

### *Apateticus ludovicianus* new species.

Elongate, narrow; general color above pale brown with a slightly olivaceous tinge; head and anterior one-half of pronotum pale clay yellow; humeri produced into acute, rounded points; costal margin of hemelytra with a conspicuous ivory-white line extending from base to membrane; median ventral spine very short, blunt.

Head elongate, depressed, sides nearly parallel, the juga only very slightly surpassing the tylus; an impressed line either side of the tylus and just outside this and parallel to it is a rather regular row of black punctures extending from base of head to tip of tylus. Outside each of these rows is another row of punctures extending from base of head to near apex and which is partly interrupted by the reddish ocelli; these punctures gradually become smaller and a little before the apex of the tylus the rows on either side become confluent. Dorsal surface of the head between the rows of punctures impunctate with rather sparse but fine subtransverse lines. Lateral margins of head with a row of black punctures extending from eyes to apex. An irregular, iridescent, greenish mark, deeply and coarsely punctured on outer side of antennal tubercle in front of eye. Eyes prominent, fuscous. Antennae with basal segment very short, pale clay yellow, a greenish-fuscous patch on outer side, which is continuous with the greenish mark on the tubercle; second segment a little more than four times as long as the first, vandyke brown, becoming darker toward tip, covered with fine, pale yellowish hairs; third segment about as long as second, blackish, paler at base and very thickly covered with pale hairs. The remaining antennal segments are missing. Rostrum heavy, pale yellow, darker toward apex, which reaches just to posterior end of metasternum.



*Apateticus ludovicianus* n. sp.